



# AKVO SPIRALIFT®

## MOVABLE POOL FLOORS



Residential



Public



Commercial



# AKVO AROUND THE WORLD:

Australia  
Austria  
Bahamas  
Belgium  
Canada  
China  
Denmark  
France  
Germany  
Hong Kong (PRC)  
Japan  
Jordan

Korea  
Luxembourg  
Mexico  
Norway  
Qatar  
Russia  
Seychelles  
Spain  
Switzerland  
UAE  
UK  
USA

## DOHA (QATAR)

2020

Area:  $\pm 77 \text{ m}^2$

Location: Exterior

Floor Travel:  $\pm 1.8 \text{ m}$

Finish: Mosaic porcelain tiles

Type: Skimmer

Capacity:  $250 \text{ kg/m}^2$

In collaboration with UNIKPOOLS







Residential

## LONDON (UK)

2014

Area: 75 m<sup>2</sup>

Location: Interior

Floor Travel: 1.35 m

Finish: Hardstone

Type: Skimmer

Capacity: 250 kg/m<sup>2</sup>

In collaboration with Guncast Swimming Pools



Residential

## HONG KONG (PRC)

2019

Area: 34 m<sup>2</sup>

Location: Exterior

Floor Travel: 1.3 m

Finish: Wood composite

Type: Overflow

Capacity: 250 kg/m<sup>2</sup>

In collaboration with Ever Crown Engineering



Residential

## MONTERREY (MEXICO)

2019

Area: 70 m<sup>2</sup>

Location: Exterior

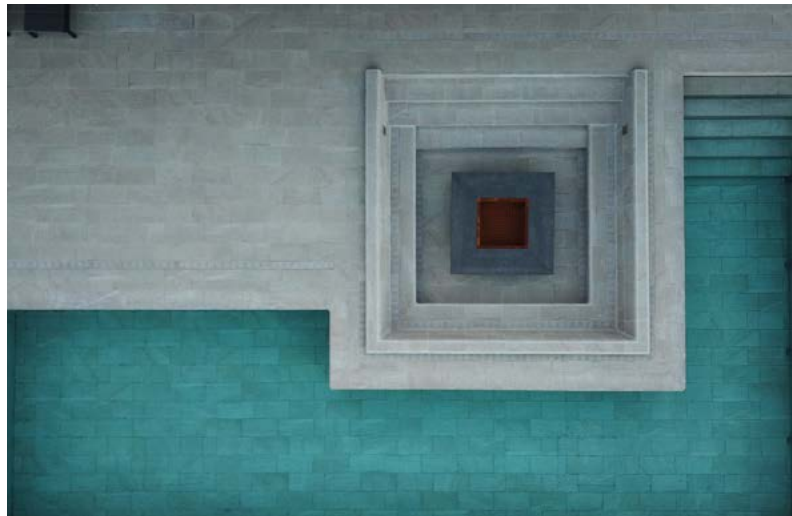
Floor Travel: 1.2 m

Finish: Hardstone pavers

Type: Infinity

Capacity: 250 kg/m<sup>2</sup>

Floor mounted glass railings (Infinity side)



## MANHATTAN BEACH (USA)

2017

Area: 180 ft<sup>2</sup>

Location: Exterior

Floor Travel: 64 in

Finish: Hardstone

Type: Skimmer

Capacity 40lb/ft<sup>2</sup>

Full length self depositing bench



Residential





## NEW ORLEANS (USA)



Residential

2015

Area: 824 ft<sup>2</sup>

Location: Exterior

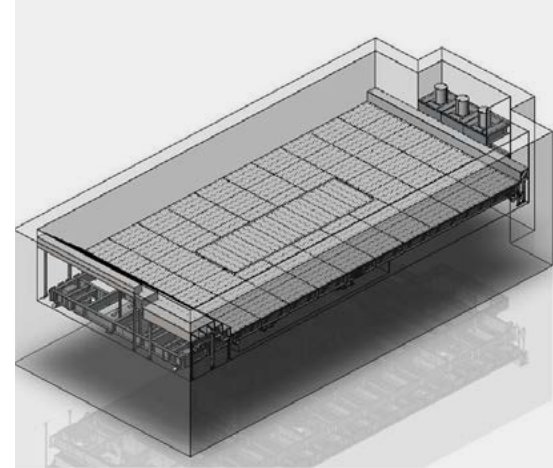
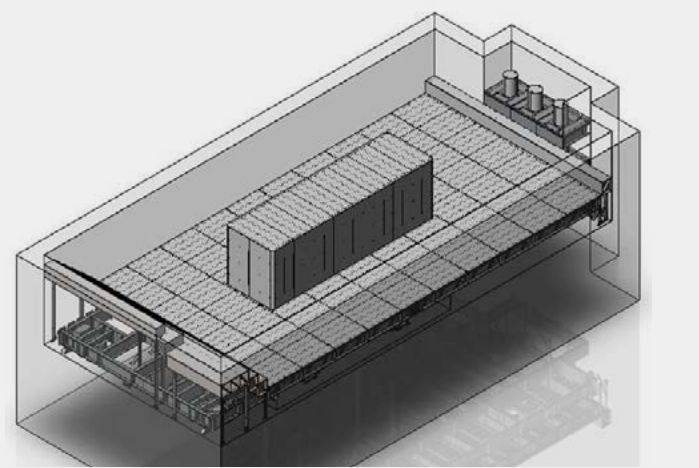
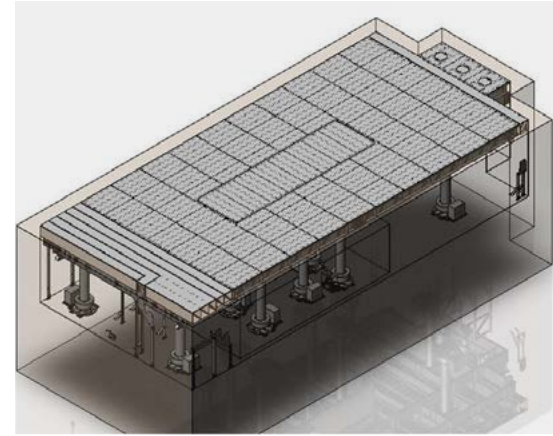
Floor Travel: 65 in

Finish: Patterned glass mosaic tiles

Type: Skimmer

Capacity: 50 lb/ft<sup>2</sup>

Central autonomous island  
& wet bar







Commercial

## PARADOX HOTEL MANSION NIGHTCLUB (CANADA)

2016

Area: 45 m<sup>2</sup>

Location: Interior

Floor Travel: 1.4 m

Finish: Tiles

Type: Skimmer

Capacity: 500 kg/m<sup>2</sup>

Self-depositing in-pool stairs



## ÉCOLE DE CHANDIEU (SWITZERLAND)



Public

2016

Area: 300 m<sup>2</sup>

Location: Interior

Floor Travel: 1.6 m

Finish: Stainless steel panels

Type: Overflow

Capacity: 65 kg/m<sup>2</sup>

Two autonomous 150 m<sup>2</sup> movable  
pool floors separated by a motorized  
retractable skirt

In collaboration with Elevo Fonds Mobiles







Commercial

## DREAM HOLLYWOOD HOTEL (USA)

2017

Area: 476 ft<sup>2</sup>

Location: Exterior

Floor Travel: 38 in

Finish: Tiles

Type: Skimmer

Capacity: 120 lb/ft<sup>2</sup>

Roof-top venue pool



## SOLIHULL (UK)

2017

Area: 18 m<sup>2</sup>

Location: Exterior

Floor Travel: 1.4 m

Finish: Tiles

Type: Skimmer

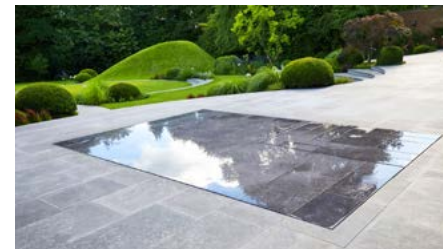
Capacity: 250 kg/m<sup>2</sup>

Self-depositing in-pool stairs

In collaboration with Guncast Swimming Pools



Residential







Residential

## MANHATTAN BEACH (USA)

2018

### POOL

Area: 400 ft<sup>2</sup>

Location: Exterior

Floor Travel: 66 in

Finish: Hardstone

Type: Skimmer

Finish: Porcelain ceramic tiles

Capacity: 40 lb/ ft<sup>2</sup>

Full width steps

### SPA

Area: 81 ft<sup>2</sup>

Location: Exterior

Floor Travel: 42 in

Finish: Hardstone

Type: Skimmer

Finish: Porcelain ceramic tiles

Capacity: 40 lb/ ft<sup>2</sup>

In-spa self-depositing perimeter bench







Commercial

## FENDI CHÂTEAU (USA)

2016

Area: 750 ft<sup>2</sup>

Location: Exterior

Floor Travel: 51 in

Finish: Tiles

Type: Skimmer

Capacity: 100 lb/ft<sup>2</sup>



## COLORADO (USA)

2016

Area: 130 ft<sup>2</sup>

Location: Interior

Floor Travel: 42 in

Finish: Tiles

Type: Skimmer

Capacity: 50 lb/ft<sup>2</sup>

Plunge pool

In collaboration with Guncast Swimming Pools



Residential







Residential

## LOHNE (GERMANY)

2018

Area: 93 m<sup>2</sup>

Location: Exterior

Floor Travel: 1.5 m

Finish: Hardstone

Type: Overflow

Capacity: 250 kg/m<sup>2</sup>

In collaboration with Bodan  
Schwimmbadbau GmbH & Co. KG



## PEPS, UNIVERSITÉ LAVAL (CANADA)

2014

Area: 210 m<sup>2</sup>

Location: Interior

Floor Travel: 2.0 m

Finish: Solid polymer panels

Type: Overflow

Capacity: 65 kg/m<sup>2</sup>

Complies with EN13451-11



Public







Residential

## MAHE (SEYCHELLES)

2020

Area: 50 m<sup>2</sup>

Location: Exterior

Floor Travel: 1.4 m

Finish: Wood

Type: Overflow

Capacity: 250 kg/ m<sup>2</sup>

Self-depositing non-symmetrical diagonal corner steps



## MUNICH OLYMPIC SWIMMING CENTRE (GERMANY)

2019

Area: 350 m<sup>2</sup>

Location: Interior

Floor Travel: 2.5 m

Type: Overflow

Capacity: 65 kg/ m<sup>2</sup>

Stainless steel pool shell and movable pool floor covering

In collaboration with Bodan  
Schwimmbadbau GmbH & Co. KG



Public





Public

## LUZHNIKI SPORT COMPLEX (RUSSIA)

2018

Area: 150 m<sup>2</sup>

Location: Interior

Floor Travel: 1.4m

Type: Overflow

Capacity: 65 kg/ m<sup>2</sup>

In collaboration with Piscine Desjoyaux



## ST-TROPEZ (FRANCE)

2019

Area: 200 m<sup>2</sup>

Location: Exterior

Floor Travel: 2.35 m

Finish: Hardstone

Type: Overflow

Capacity: 250 kg/ m<sup>2</sup>

Six independent lifts with all core steps and retractable spa

In collaboration with UNIKPOOLS



Residential





Public

## ASHFIELD AQUATIC CENTRE (AUSTRALIA)

2020

Area: 680 m<sup>2</sup>

Location: Exterior

Floor Travel: 2.1 m

Finish: Perforated anti-slip GPM paneling  
with embedded lane lines

Type: Overflow

Capacity: 65 kg/ m<sup>2</sup>

In collaboration with SR Smith



## TACHIKAWA (JAPAN)

2019

Area: Rectangular 12 m<sup>2</sup>

Location: Exterior

Floor Travel: 1.15 m below deck – 0.70 m above deck to tabletop  
position

Finish: Engineered wood decking

Type: Skimmer

Capacity: 200 kg/ m<sup>2</sup>

Special Features: Pool, deck and tabletop Configurations

In collaboration with Niccon Pools



Residential



## VERBIER (SWITZERLAND)



Residential

2012

Area: 22 m<sup>2</sup>

Location: Interior

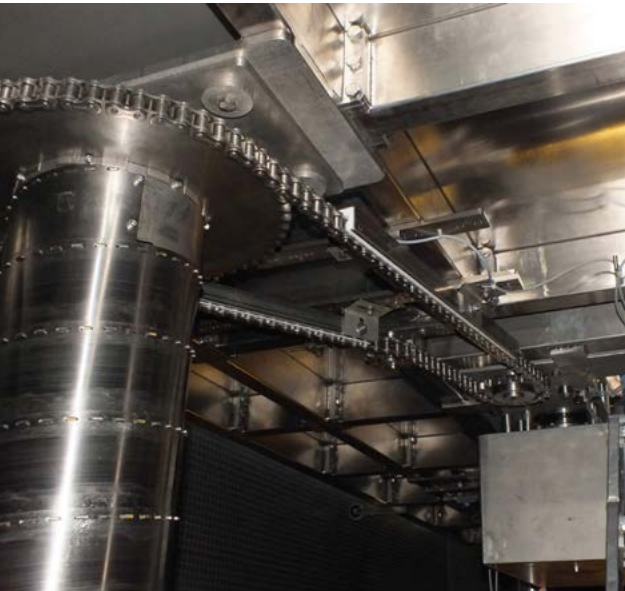
Floor Travel: 2.0 m

Finish: Hardstone pavers

Type: Skimmer

Capacity: 250 kg/m<sup>2</sup>

In collaboration with Elevo Fonds Mobiles



## SASKATOON (CANADA)



Residential

2016

Area: 38.6 m<sup>2</sup>

Location: Interior

Floor Travel: 2m

Finish: Marine grade solid polymer with anti-skid texture

Type: Overflow

Capacity: 250 kg/m<sup>2</sup>







Public

## OAK HILL HIGH (USA)

2019

Area: 1200 ft<sup>2</sup>

Location: Interior

Floor Travel: 48 in

Finish: Marine grade polymer with antiskid

Capacity: 13 lb/ft<sup>2</sup>

Retrofit to a 50-year-old hydraulic MPF



## FAQ

### Where does the water go when the floor moves up or down?

The water remains in the pool. The floor is installed in a sealed pool shell. As it moves up and down, pool water flows above and below the platform through the small gap along the floor's perimeter. There is no need to empty the pool before a floor movement and there is no risk of the pool overflowing.

### Can the height of an Akvo movable pool floor be adjusted to any position?

Yes, the operator can jog the floor up or down to reach any position within the lift's normal range of travel, although for practical reasons, Akvo's controls usually feature a selection of pre-set depths. Commercial applications may be limited to full depth or deck level per local regulations.

### What is the capacity of an Akvo movable pool floor versus a pool cover?

Akvo movable pool floors are designed to support 200-600 kg/m<sup>2</sup> (40-125 lb/ft<sup>2</sup>), while conventional pool covers are not rated to withstand any loading. Floor capacity is determined on a project-to-project basis depending on local building codes and project-specific occupancy requirements.

Simply put, an Akvo movable pool floor provides all the benefits of a pool cover (evaporation control, temperature control, safety, etc.) while also creating a functional space above the water when the pool is closed.

### Is an Akvo-qualified technician required for the installation of a movable pool floor?

Due to the specialized nature of Akvo's equipment, all projects must be installed by qualified technicians. Akvo's team has installed movable pool floors locally and internationally. Also, Akvo has certified local partners in 6 countries that handle installations in their respective regions.

### Is an Akvo-qualified pool builder required for the construction of the pool basin?

No, clients can select their preferred local pool builders to build the pool basin. Akvo will guide and support the pool builder throughout the design, fabrication and installation stages.

### Is Akvo's equipment compatible with all filtration systems?

Akvo's equipment is safe for use with chlorine, ozone and UV filtration systems.

Saltwater filtration systems are not appropriate for use with Akvo floors as they pose a risk for corrosion of the mechanical components.



### **What is required to maintain an Akvo movable pool floor?**

Akvo's movable pool floor system is relatively low maintenance, especially when compared to alternative technologies on the market that require cable calibration, hydraulic fluid top-ups or regular leveling of the floor.

The only maintenance required on an Akvo movable pool floor is the yearly replacement of grease cartridges. Each Spiralift unit is actively lubricated with food grade grease (NSF H1 certified) via a pressurized cartridge. To replace these units, a certified operator lifts the movable pool floor to its Maintenance Position (lifting the floor above the deck, granting access to the underfloor). In this position, the cartridges mounted to the perimeter of the platform's structure can easily be switched out by hand.

This simple maintenance process does not require owners to empty the pool nor does it require them to hire divers to perform the work.

In addition to regular maintenance, a visual check-up of the system is recommended once every 5 years.

### **Can Akvo produce movable pool floors for split-depth pools (pools with a shallow end and a deep end)?**

Yes, there are two main options for split-depth pools.

In one instance, two fully independent pool floors can be installed in the same basin allowing users to independently change the depth of each section. This option is often used when clients wish to open a portion of the pool while keeping the other fully

closed, granting users additional deck space. Note that multiple floors can be installed to achieve a pool with as many configurable depths as desired. Alternatively, a Baja Shelf can be installed, allowing users to achieve a terraced floor. As the Baja Shelf is linked to the same driving mechanism as the main floor, the Baja Shelf will lower synchronously with the main floor until it reaches a predetermined height, at which it will stop.

Note that these systems can be installed within the same pool, and steps can be integrated for easy transitions between one level and the next.

### **At what phase should Akvo get involved in a new project?**

Getting Akvo involved at an early stage, before pool and site design are initiated, benefits all parties. Akvo is accustomed to working with architects and pool builders to optimize overall pool design.

The pool basin should be designed to accommodate a movable pool floor that meets all the client's requirements. Its design is even more critical in the case of sophisticated pool layouts or pools with multiple movable floors or accessories (steps, benches, etc.).

It is also recommended that clients seek Akvo's help to select a location for the pool's dry room. Note that the dry room location may influence the overall site design.

# UP SCALE YOUR POOL



## **MAIN OFFICE**

3185 1<sup>re</sup> Rue (1<sup>st</sup> Street)

Saint-Hubert, QC

Canada

J3Y 8Y6

**T** + 1 450 678-7226

**[info@akvospiralift.com](mailto:info@akvospiralift.com)**

**[www.akvospiralift.com](http://www.akvospiralift.com)**